



SWITZERLAND 



Bergonzo Charles SA

For all your pulverization problems

Nozzles for fuel oil burners

Pulverization



Flyback nozzles :

To allow perfect function never close the flyback completely

Bergonzo Charles SA, Beausite 3, CH-2740 Moutier

Phone : +41 (0) 32 494 60 00, Fax : +41 (0) 32 494 60 05

E-mail : bergonzo@bergonzo.ch

Website : www.bergonzo.ch



Type R

Nozzles for fuel oil burners

Type	Pulverization angle			
	30°	45°	60°	80°
R	0,40 - 1,50	0,40 - 3,75	0,40 - 3,75	0,40 - 3,75
RC		4,00 - 12	4,00 - 30	4,00 - 30

Standard output in USG/hr										
0,40	0,75	1,25	2,00	3,25	5,00	7,50	10	12,5	17	24
0,50	0,85	1,35	2,25	3,50	5,50	8,00	10,5	13	18	26
0,55	1,00	1,50	2,50	3,75	6,00	8,50	11	14	19	28
0,60	1,10	1,65	2,75	4,00	6,50	9,00	11,5	15	20	30
0,65	1,20	1,75	3,00	4,50	7,00	9,50	12	16	22	

Output at pressure of 7 bar : 1 USG = 3,785 l.

Viscosity : 1,3 ° E

Stainless steel filter :

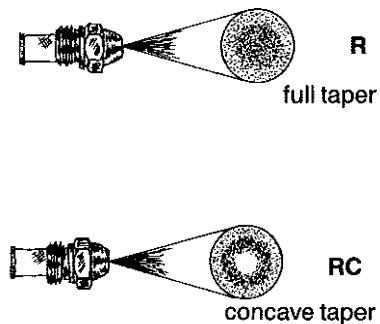
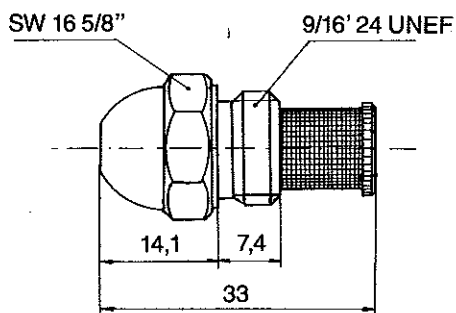
Net density 200 stitches up to 2,00 USG/hr and net density 120 stitches above 2,00 USG/hr

Packing : 12 and 20 pieces in cardboard box

Each nozzle is tested individually

Example for placing your orders :

Number of pieces	Type	Angle	Output
20	R	45°	1,10 USG/hr



If our nozzles are dismantled, we refuse to accept any responsibility and any return.

Subject to modifications

June 2014



Type D saphir

Nozzles for fuel oil burners

Thanks to the sapphire insert this nozzle saves energy and respects ecological standards

Type	Pulverization angle	
	30°	45° - 60° - 80°
D	0,50 - 50	0,40 - 50

Standard output in USG/hr													
0,40	0,75	1,25	1,75	2,75	4,00	6,00	8,00	10	12	16	20	28	40
0,50	0,85	1,35	2,00	3,00	4,50	6,50	8,50	10,5	13	17	22	30	45
0,55	1,00	1,50	2,25	3,25	5,00	7,00	9,00	11	14	18	24	33	50
0,60	1,10	1,65	2,50	3,50	5,50	7,50	9,50	11,5	15	19	26	36	
0,65				3,75									

Output at pressure of 7 bar : 1 USG = 3,785 l.

Viscosity : 1,3 ° E

Stainless steel filter :

Net density 200 stitches up to 2,00 USG/hr and 120 stitches above 2,00 USG/hr

Packing : 12 pieces and 20 pieces in cardboard box

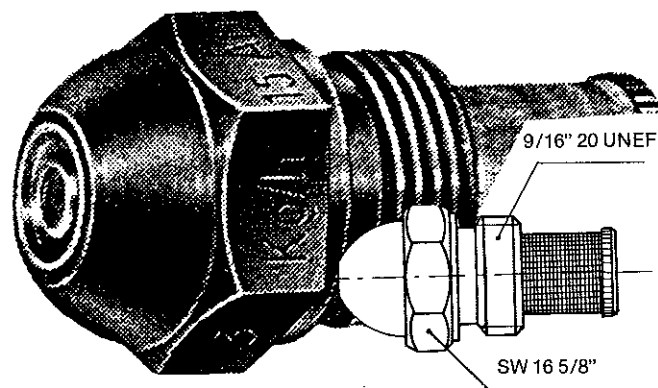
Each nozzle is tested individually

Example for placing your orders :

Number of pieces	Type	Angle	Output
40	D	60°	1,50 USG/hr

BENEFITS OF THE SAPHIRE NOZZLE

- 1) Finer pulverization
- 2) Improved combustion
- 3) Energy saving
- 4) High resistance to wear and corrosion



If our nozzles are dismantled, we refuse to accept any responsibility and any return.



Type A

Flyback nozzles

Sapphire insert

Type	Pulverization angle	
	45°	60°
A3	3 - 250	3 - 250
A4	25 - 250	25 - 250

Standard output in kg/hr								
3	10	30	50	70	110	150	190	230
4	15	35	55	80	120	160	200	240
5	20	40	60	90	130	170	210	250
7,5	25	45	65	100	140	180	220	

Initial pressure : 20 bar

Variable output

1 kg = 0,31 USG

Max. : flyback completely closed

Viscosity : 1,3 ° E

Min. : flyback pressure 3 bar

A3 : 1/3 of max. output

A4 : 1/4 of max. output

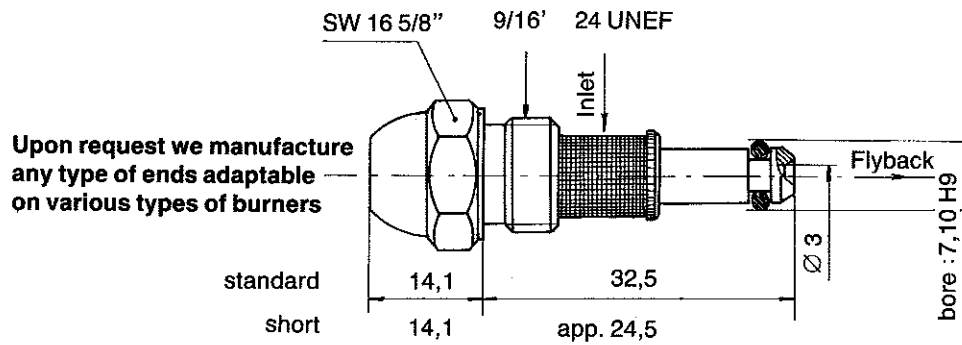
Stainless steel filter :

Net density 200 stitches up to 10 kg/hr and 120 stitches above 10 kg/hr

Packing: 20 pieces in cardboard box

Example for placing your orders :

Number of pieces	Type	Ratio	Angle	Output
40	A	3	60°	120 kg/hr



If our nozzles are dismantled, we refuse to accept any responsibility and any return.

Subject to modifications

June 2014



Type B

Industrial flyback nozzles

With or without needle

Type	Pulverization angle	
	30°	45° - 60° - 80°
B3	100 - 1000	20 - 1000
B5	100 - 1000	20 - 1000

Standard output in kg/hr									
20	50	90	130	200	300	400	500	600	800
25	60	100	140	225	325	425	525	650	850
30	70	110	150	250	350	450	550	700	900
40	80	125	175	275	375	475	575	750	950
									1000

Initial pressure : 25 bar

Variable output

Max. : flyback completely closed

Min. : flyback pressure 3 bar

Viscosity : 2 ° E

B3 : 1/3 of max. output

B5 : 1/5 of max. output

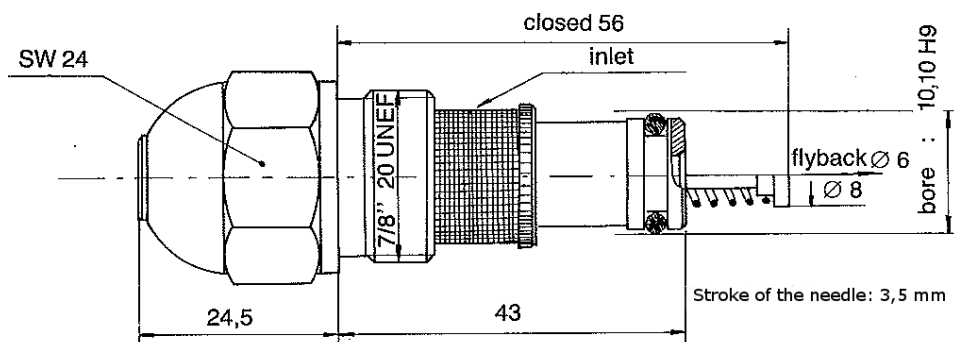
With filter : up to 100 kg/hr and upon request above 100 kg/hr

Packing : Individual plastic box

Upon request we supply: AA = with needle and SA = without needle

Example for placing your orders :

Number of pieces	Type	Ratio	Angle	With needle	Output
40	B	5	60°	AA	125 kg/hr



If our nozzles are dismantled, we refuse to accept any responsibility and any return.

Subject to modifications

June 2014



Type C

Industrial flyback nozzles

With or without needle

Type	Pulverization angle			
	45°	60°	80°	120°
C3	350 - 2000	350 - 2000		
C5	350 - 1400	350 - 1400	800 - 2000	800 - 2000

Standard output in kg/hr								
350	500	650	800	950	1100	1250	1500	1800
400	550	700	850	1000	1150	1300	1600	1900
450	600	750	900	1050	1200	1400	1700	2000

Initial pressure : 25 bar

Viscosity : 2 ° E

Variable output :

Max. : flyback completely closed

Min. : flyback pressure 3 bar

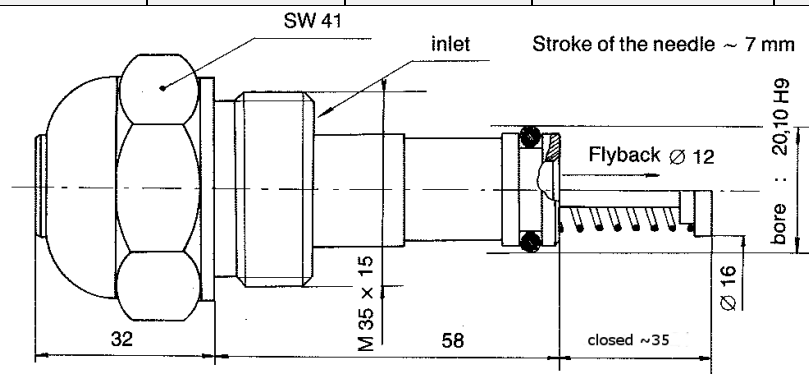
C3 = 1/3 of max. output

C5 = 1/5 of max. output

Upon request we supply: AA = with needle/ SA = without needle

Example for placing your orders :

Number of pieces	Type	Ratio	Angle	With needle	Output
40	C	3	45°	AA	950 kg/hr



If our nozzles are dismantled, we refuse to accept any responsibility and any return.

Subject to modifications

June 2014



Type H

Industrial flyback nozzles

Type	Pulverization angle			
	30°	45°	60°	80°
H3	75 - 1000	75 - 1200	70 - 1000	75 - 1000
H5	75 - 1000	75 - 1000	75 - 1100	75 - 1000

	Standard output in kg/h					
	70	75	80	90	100	
125	250	375	600	800	1050	
150	275	400	650	850	1100	
175	300	450	675	900	1200	
200	325	500	700	950		
225	350	550	750	1000		

Initial pressure : 25 bar

Viscosity : 2 ° E

Variable output :

Max. : flyback pressure 1 bar

Min. : flyback pressure 3 bar

H3 = 1/3 max. output

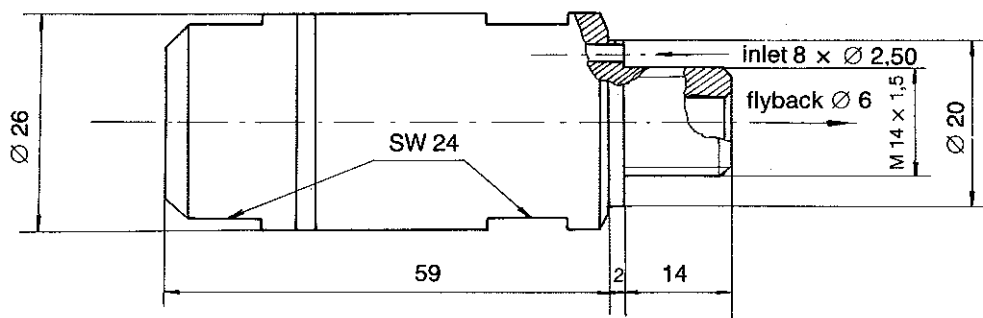
H5 = 1/5 max. output

Packing : Individual plastic box

For EH orders we also supply contents separately

Example for placing your orders :

Number of pieces	Type	Ratio	Angle	Output
40	H	3	45°	150 kg/hr



If our nozzles are dismantled, we refuse to accept any responsibility and any return.

Subject to modifications

June 2014



Type M 14

Industrial flyback nozzles

Type	Pulverization angle	
	45°	55°
M 14/3 saphir	30 – 350	
M14/5 saphir	30 – 350	35 – 300
M 14/3	375 – 1200	
M14/5	375 – 1200	350 – 1300

Standard output in kg/hr								
30	50	120	200	300	450	650	850	1050
35	60	140	225	350	500	700	900	1100
40	80	160	250	375	550	750	950	1150
45	100	180	275	400	600	800	1000	1200
								1300

Initial pressure : 25 bar

Viscosity : 2 ° E

Variable output:

Max. : flyback pressure 1 bar

Min. : flyback pressure 3 bar

M 14/3 = 1/3 of max. output

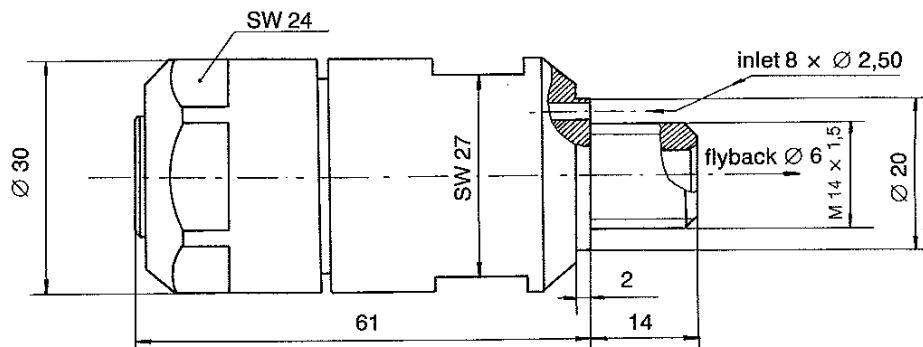
M 14/5 = 1/5 of max. output

Packing : individual cardboard box

For EM 14 orders we also supply contents separately

Example for placing your orders:

Number of pieces	Type	Ratio	Angle	Output
40	M 14	3	45°	100 kg/hr



If our nozzles are dismantled, we refuse to accept any responsibility and any return.

Subject to modifications

June 2014



Type M 30

Industrial flyback nozzles

Type	Pulverization angle	
	45°	55°
M30 1/5	700 - 2000	700 - 2000

Standard output in kg/hr				
700	950	1150	1350	1700
800	1000	1200	1400	1800
850	1050	1250	1500	1900
900	1100	1300	1600	2000

Initial pressure : 25 bar

Variable output

Max. : flyback pressure - 1 bar

Viscosity : 2 ° E

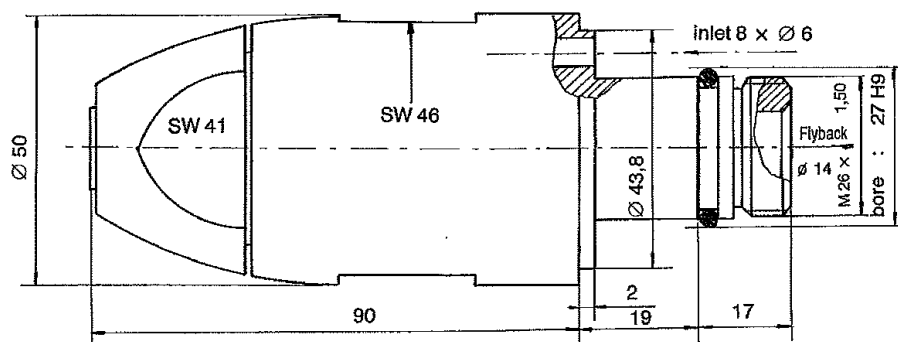
Min. : flyback pressure 3 bar

M30 1/5 = 1/5 of max. output

For EM 30 orders we also supply contents separately

Example for placing your orders :

Number of pieces	Type	Angle	Output
40	M30	45°	1000 kg/hr



If our nozzles are dismantled, we refuse to accept any responsibility and any return.

Subject to modifications

June 2014



Type S

Industrial flyback nozzles

Type	Pulverization angle	
	45°	60°
S 5	60 -1000	60 - 1000

Standard output in kg/hr						
60	140	225	350	550	750	950
80	160	250	400	600	800	1000
100	180	275	450	650	850	
120	200	300	500	700	900	

Initial pressure : 25 bar

Variable output

Max. : flyback completely closed

Viscosity : 2 ° E

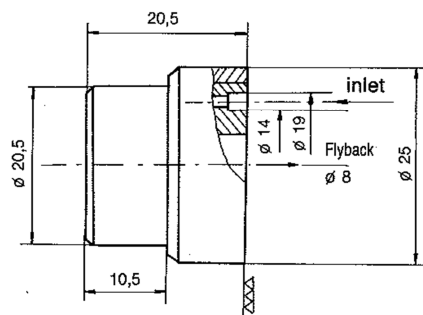
Min. : flyback pressure 3 kg/cm2

S5 : 1/5 of max. output

Packing : nozzle tip and baffle manufactured together and numbered

Example for placing your orders :

Number of pieces	Type	Angle	Output
40	S	60°	120 kg/hr



If our nozzles are dismantled, we refuse to accept any responsibility and any return.

Subject to modifications

June 2014



Kg/hr output of nozzles for fuel oil burner and potential of thermal efficiency calculated for a 90% combustion

Nozzles output in USG	Pump pressure in kg/cm2							
		7	10	12	14	16	18	20
0,40	kg/h	1,28	1,49	1,62	1,79	1,91	2,00	2,01
	kcal/h	11,520	13,410	14,580	16,110	17,190	18,000	18,090
0,50		1,58	1,90	2,05	2,14	2,32	2,40	2,46
		14,220	17,100	18,450	19,260	20,880	21,600	22,140
0,60		1,91	2,30	2,55	2,72	2,90	3,02	3,10
		17,190	20,700	22,050	24,480	26,100	27,180	27,900
0,65		2,11	2,40	2,76	2,95	3,09	3,29	3,41
		18,990	21,600	24,840	26,550	27,810	29,610	30,690
0,75		2,38	2,89	3,18	3,40	3,57	3,78	3,91
		21,420	26,010	28,620	30,600	32,130	34,020	35,190
0,80		2,60	2,95	3,40	3,63	3,79	3,96	4,04
		23,400	26,550	30,600	32,670	34,110	35,640	36,360
0,85		2,72	3,27	3,57	3,82	4,07	4,30	4,42
		24,480	29,430	32,130	34,380	36,630	38,700	39,780
1,00		3,20	3,85	4,25	4,50	4,78	5,03	5,23
		28,880	34,650	38,250	40,500	43,020	45,270	47,070
1,20		3,87	4,63	5,10	5,44	5,74	6,04	6,30
		34,830	41,670	45,900	48,960	51,660	54,360	56,700
1,35		4,33	5,20	5,74	6,12	6,46	6,80	7,07
		38,970	46,800	51,660	55,080	58,140	61,200	63,630
1,50	Kg/h	4,80	5,78	6,38	6,80	7,19	7,56	7,86
	kcal/h	43,200	52,020	57,420	61,200	64,710	68,040	70,740
1,65		5,31	6,38	7,01	7,48	7,90	8,34	8,67
		47,790	57,420	63,090	67,320	71,100	75,060	78,030
1,75		5,61	6,76	7,44	7,95	8,41	8,89	9,23
		50,490	60,840	66,960	71,550	75,690	80,010	83,070
2,00		6,42	7,70	8,50	9,10	9,60	10,10	10,45
		57,780	69,300	76,500	81,900	86,400	90,900	94,050
2,25		7,22	8,67	9,56	10,20	10,80	11,40	11,80
		64,980	78,030	86,040	91,800	97,200	102,600	106,200
2,50		8,04	9,65	10,59	11,30	11,99	12,61	13,10
		72,360	86,850	95,310	101,700	107,910	113,490	117,900
3,00		9,65	11,55	12,70	13,60	14,40	15,11	15,69
		86,850	103,950	114,300	122,400	129,600	135,990	141,210
3,50		11,21	13,47	14,81	15,85	16,75	17,61	18,30
		100,890	121,230	133,290	142,650	150,750	158,490	164,700
4,00		12,82	15,41	16,95	18,10	19,12	20,02	20,09
		115,380	138,690	152,550	162,900	172,080	180,180	180,810
4,50		14,45	17,32	19,10	20,04	21,50	22,70	23,29
		130,050	155,880	171,900	180,360	193,500	204,300	209,520
5,00		16,10	19,30	21,20	22,65	24,00	25,25	26,20
		144,900	173,700	190,800	203,850	216,000	227,250	235,800
5,50		17,70	21,20	23,30	24,90	26,40	27,70	28,80
		159,300	190,800	209,700	224,100	237,600	249,300	259,200
6,00		19,60	23,17	25,50	27,20	28,75	30,03	31,45
		176,400	208,530	229,500	244,800	258,750	270,270	283,050
6,50	Kg/h	21,10	24,00	27,64	29,50	30,90	32,90	34,10
	kcal/h	189,900	216,000	248,760	265,500	278,100	296,100	306,900

If our nozzles are dismantled, we refuse to accept any responsibility and any return.



General conditions

1. **Application**

These conditions are fully valid for all our sales unless they are modified or completed by written agreements from both parties.

2. **Quotations**

All our quotations are without obligation. We keep industrial property rights and royalties on all our products. The validity of our offers is 2 months. We reserve the right to increase the prices according to the rise of the cost of living, of the cost of the surface treatment, and the raw material.

3. **Orders**

Nozzles A-D-R-RC-HO :

-For an order with a value of goods inferior to CHF 100.- : supplement of CHF 35.-

-For an order with a value of goods inferior to CHF 250.- : supplement of CHF 25.-

Other types of nozzles : for a total order of 3 nozzles a supplement varying with the required type will be invoiced.

4. **Prices**

Our prices are ex works, Moutier, exclusive of VAT, insurance, packaging, transport and customs charges.

5. **Payments**

Our invoices are due net, without any deductions, 30 days net from the date of invoice. Our proforma invoices are due net in advance.

All potential banking costs caused by payments are payable by the buyer.

6. **Delivery dates**

We always try to respect our delivery dates which we fix as precisely as we can. However we don't take any guarantee if they are not met.

In case of force majeure and strike in our company or in one of our provider's companies the delivery date is delayed proportionally. Any compensation for late delivery is excluded.

7. **Complaints**

Complaints about potential defects of our products must be written to us within 3 months after receipt of goods. Without any notification the shipment is considered as accepted.

The articles with obvious defects will be taken back and exchanged free of charge as soon as possible.

Any liability for damages caused directly or indirectly by a defect of our products is excluded.

If the customer or unauthorized people dismantle our products or use them incorrectly we deny responsibility and refuse any return of goods.

8. **Cancellation of order by the buyer**

A cancellation of order can only be accepted if the customer takes charge of the pieces already manufactured as well as of the corresponding transport charges, packaging and banking costs.

9. **Cancellation of order by Bergonzo SA**

In case of force majeure or exceptional circumstances beyond our control we reserve the right to cancel the contract and the customer cannot claim any compensation.

10. **Court of jurisdiction and applicable law**

Only Swiss law is applicable and the court of jurisdiction is in Moutier.

Bergonzo Charles SA

If our nozzles are dismantled, we refuse to accept any responsibility and any return.

Subject to modifications

June 2014